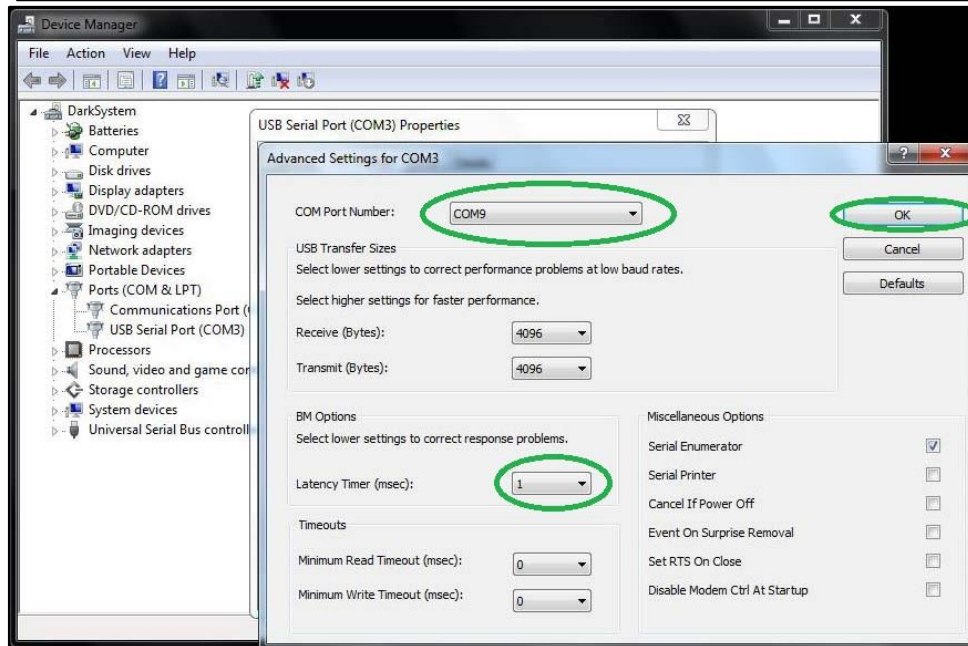
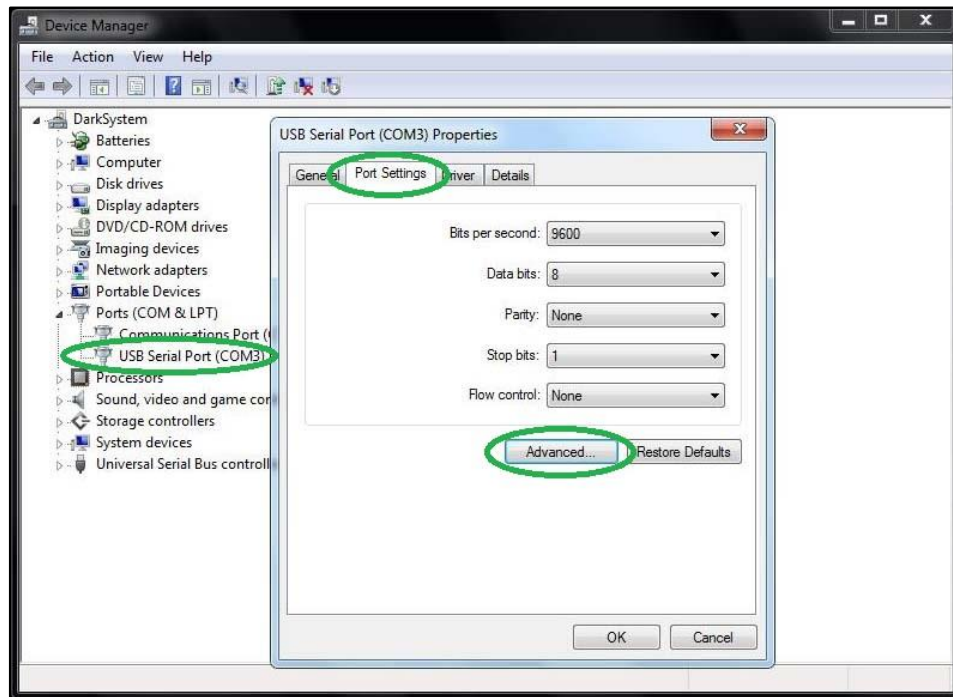
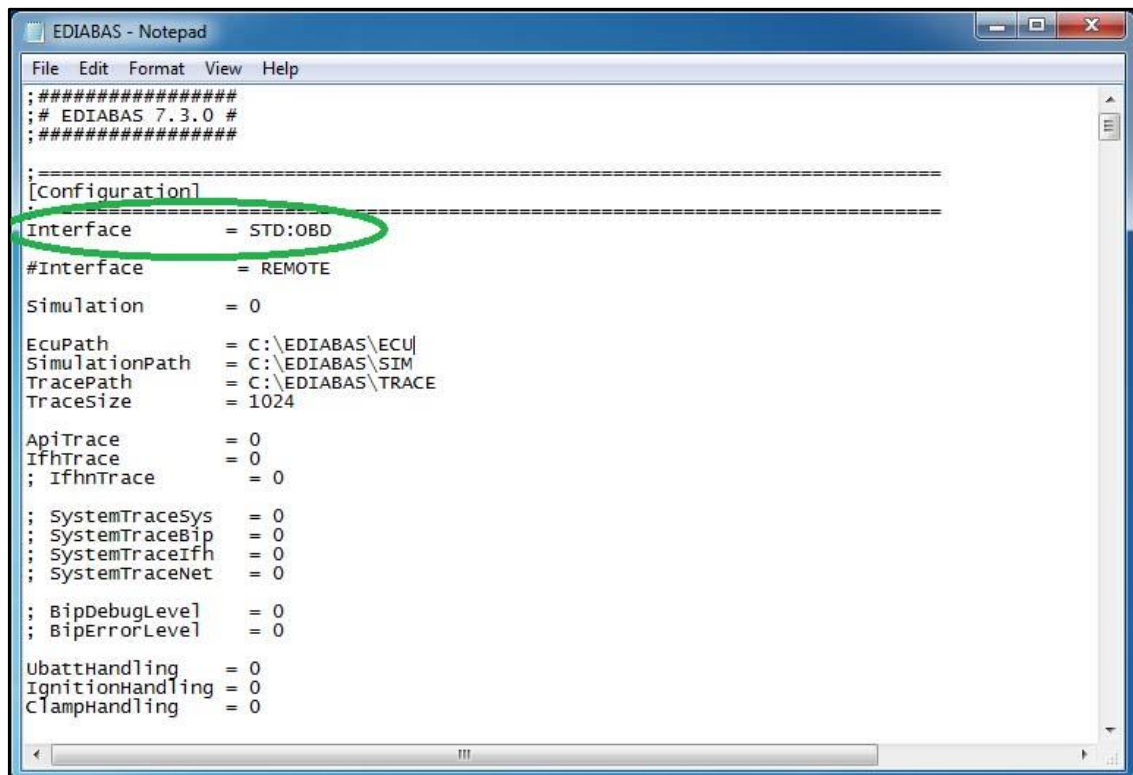


## Using BMW Rheingold ISTA with USB K+D-CAN cable

1. Plug your K+D-CAN cable and install drivers. For FTDI based cables use latest drivers.
2. Open “Device Manager”, then USB Serial Port properties, go to “Port Settings” tab and click “Advanced...”. Change port number to “COM9” and latency timer to “1”. Confirm configuration via “OK” button.



3. Open C:\EDIABAS\BIN\EDIABAS.INI with Notepad and check for "Interface = STD:OBD". In TCP settings set "Port = 6801".



```
EDIABAS - Notepad
File Edit Format View Help
;#####
;# EDIABAS 7.3.0 #
;#####

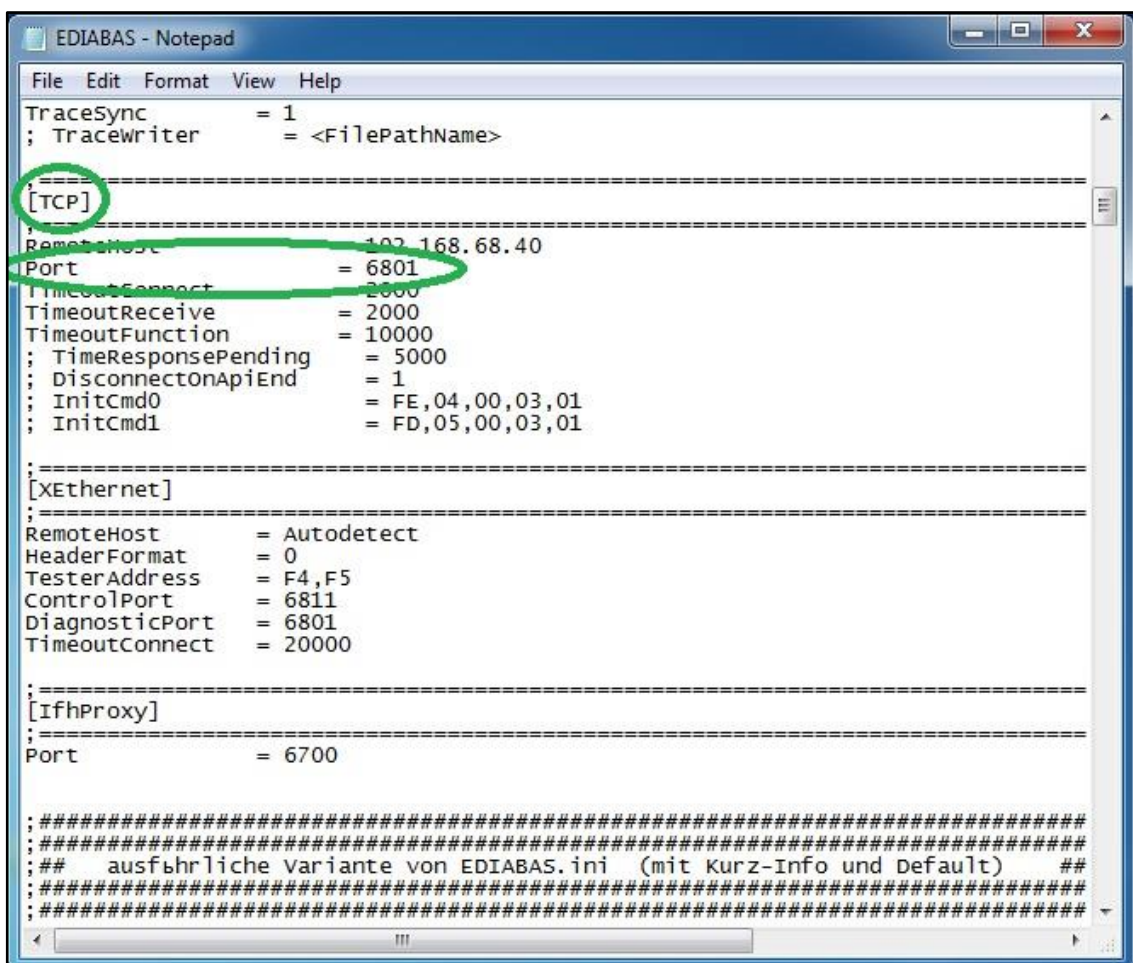
;=====
[Configuration]
;=====
Interface      = STD:OBD
#Interface     = REMOTE
Simulation     = 0
EcuPath        = C:\EDIABAS\ECU\
SimulationPath = C:\EDIABAS\SIM
TracePath      = C:\EDIABAS\TRACE
TraceSize      = 1024

ApiTrace       = 0
IfhTrace       = 0
; IfhnTrace    = 0

; SystemTraceSys = 0
; SystemTraceBip = 0
; SystemTraceIfh = 0
; SystemTraceNet = 0

; BipDebugLevel = 0
; BipErrorLevel = 0

UbatHandling   = 0
IgnitionHandling = 0
ClampHandling  = 0
```



```
EDIABAS - Notepad
File Edit Format View Help
TraceSync      = 1
TraceWriter    = <FilePathName>

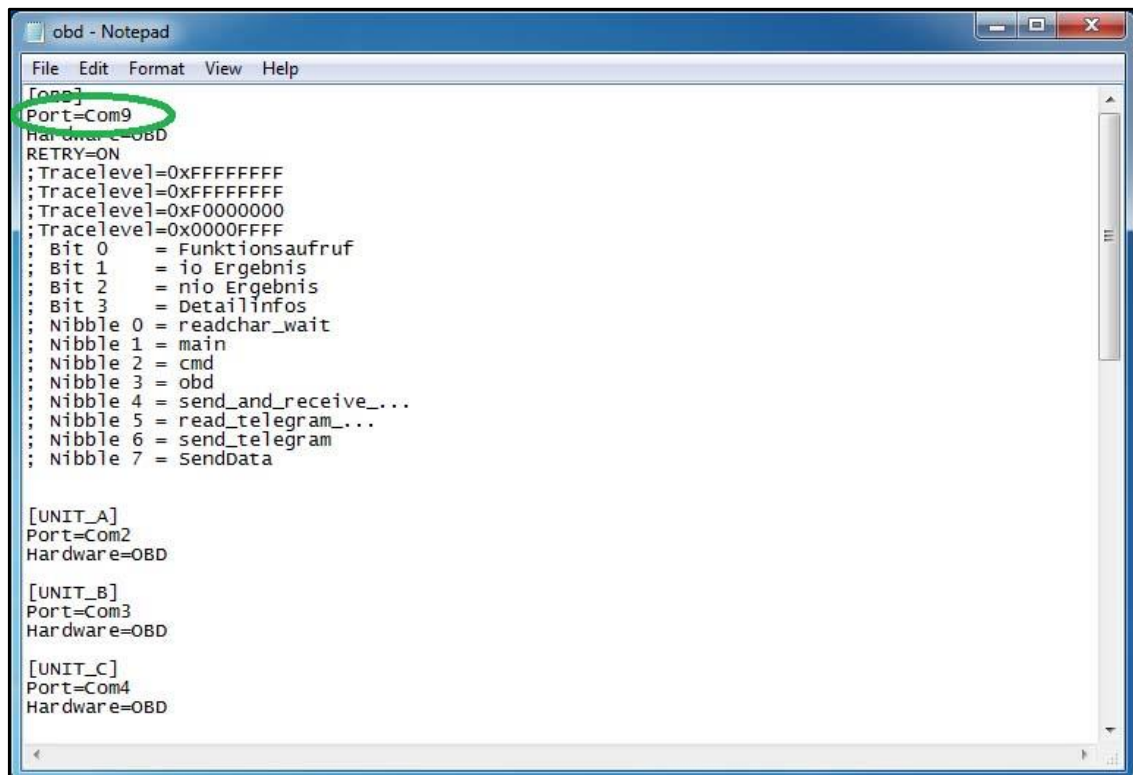
;=====
[TCP]
;=====
RemoteHost     = 192.168.68.40
Port           = 6801
TimeoutConnect = 2000
TimeoutReceive = 2000
TimeoutFunction = 10000
; TimeResponsePending = 5000
; DisconnectOnApiEnd = 1
; InitCmd0          = FE,04,00,03,01
; InitCmd1          = FD,05,00,03,01

;=====
[XEthernet]
;=====
RemoteHost     = Autodetect
HeaderFormat   = 0
TesterAddress  = F4,F5
ControlPort    = 6811
DiagnosticPort = 6801
TimeoutConnect = 20000

;=====
[IfhProxy]
;=====
Port           = 6700

;#####
;## ausführliche variante von EDIABAS.ini (mit kurz-Info und Default) ##
;#####
```

4. Open C:\EDIABAS\BIN\OBD.INI with Notepad and check for "Port=Com9".



```
[OBD]
Port=Com9
Hardware=OBD
RETRY=ON
;Tracelevel=0xFFFFFFFF
;Tracelevel=0xFFFFFFFF
;Tracelevel=0xF0000000
;Tracelevel=0x0000FFFF
; Bit 0 = Funktionsaufruf
; Bit 1 = io Ergebnis
; Bit 2 = nio Ergebnis
; Bit 3 = Detailinfos
; Nibble 0 = readchar_wait
; Nibble 1 = main
; Nibble 2 = cmd
; Nibble 3 = obd
; Nibble 4 = send_and_receive_...
; Nibble 5 = read_telegram_...
; Nibble 6 = send_telegram
; Nibble 7 = sendData

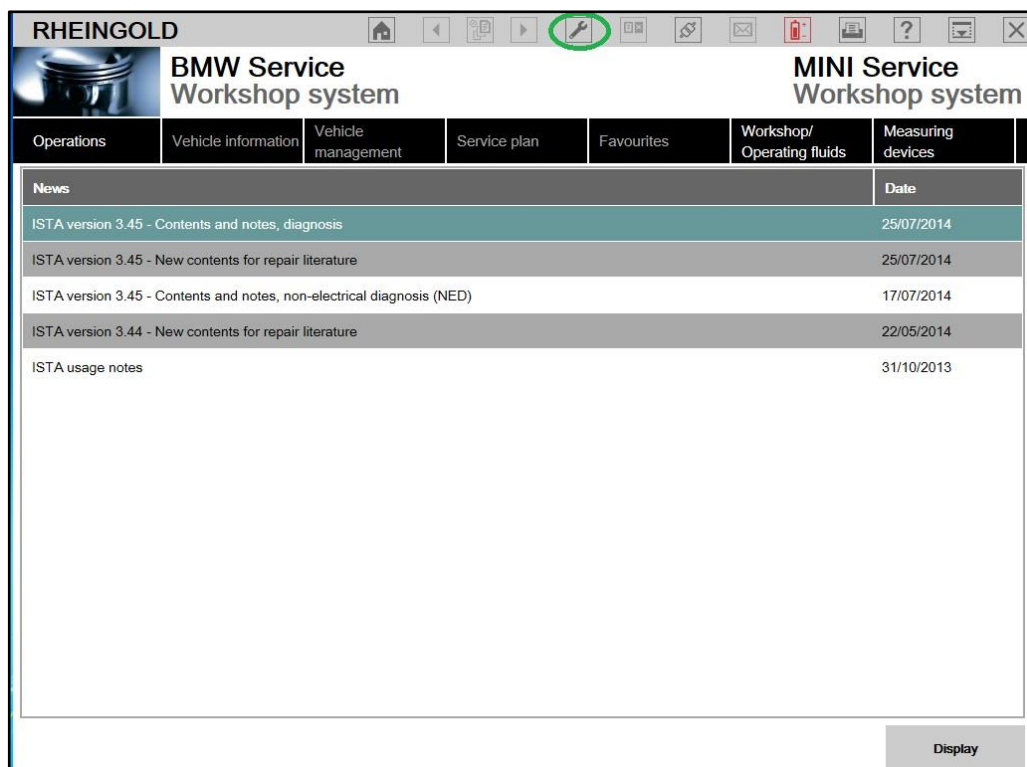
[UNIT_A]
Port=Com2
Hardware=OBD

[UNIT_B]
Port=Com3
Hardware=OBD

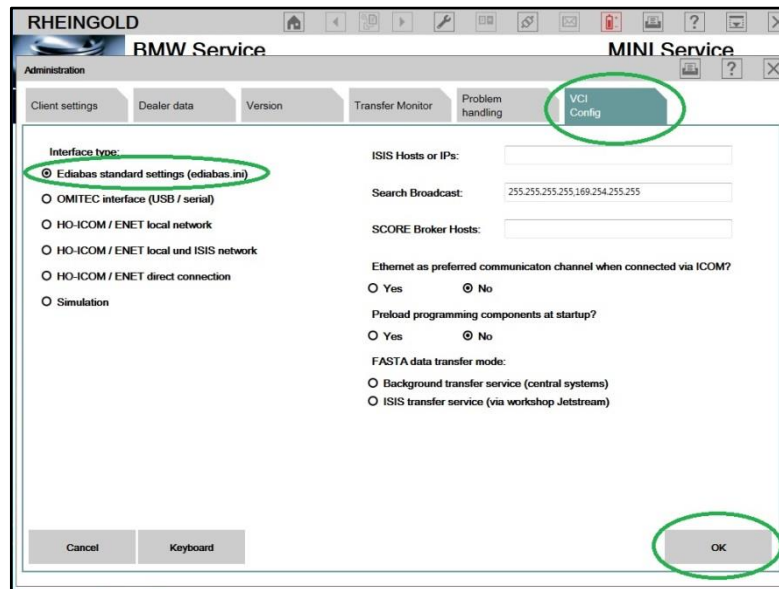
[UNIT_C]
Port=Com4
Hardware=OBD
```

5. Connect car with K+D-CAN cable to PC.

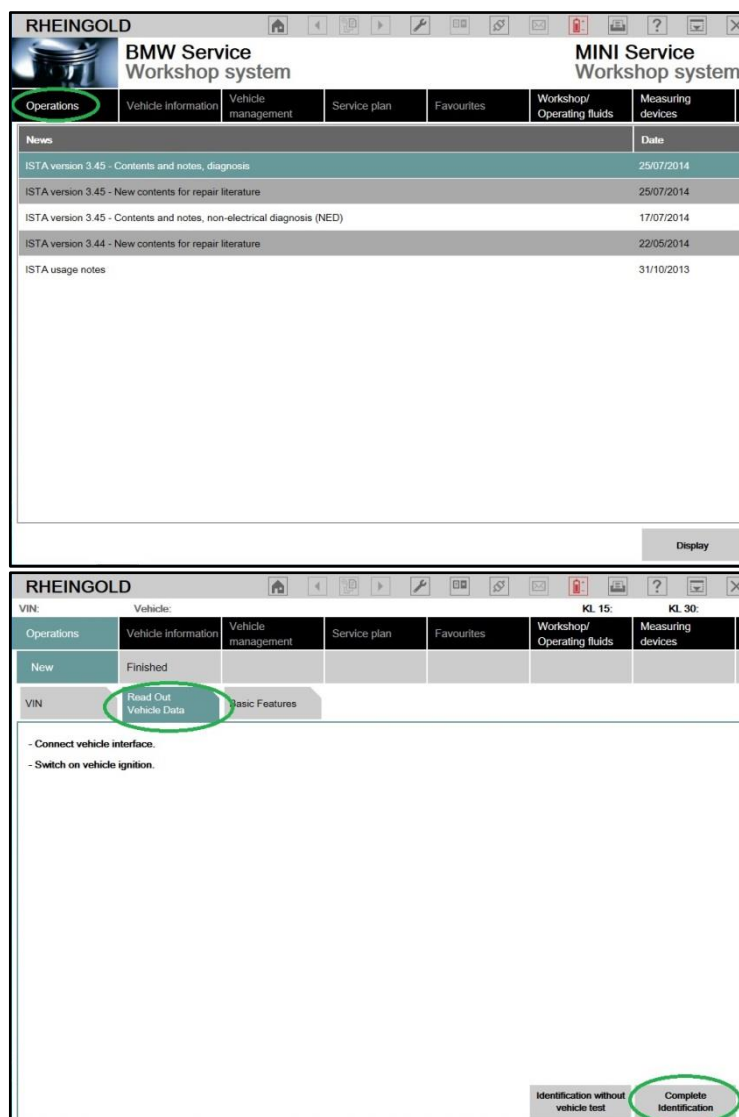
6. Now run BMW Rheingold ISTA using shortcut in start menu and wait until it boots, then press settings button.



7. Select “VCI Config” tab and “Ediabas standard settings (ediabas.ini)”, then “OK”.



8. Go “Operations”, then “Read Out Vehicle Data” and “Complete Identification”.



RHEINGOLD

VIN:

Vehicle:

KL 15: --

KL 30: --

Operations

Vehicle information

Vehicle management

Service plan

Favourites

Workshop/  
Operating fluids

Measuring  
devices

Vehicle details

Repair history

Control unit tree

Control unit list

Operations report

VIN

Series

Development code:

Production date

Gearbox:

Model

Engine

National-market version

Body

Steering

First gearshift

Exterior

Gearbox number

Basic type (model code)

Warranty

Paint code

Type approval no.:

Drive

Upholstery code

Construction date:

Integration level factory:

Integration level actual:

Technical actions:

Status

Special defect code

Title

Customer complaint:

Breakdown:

☐ Yes

☒ No

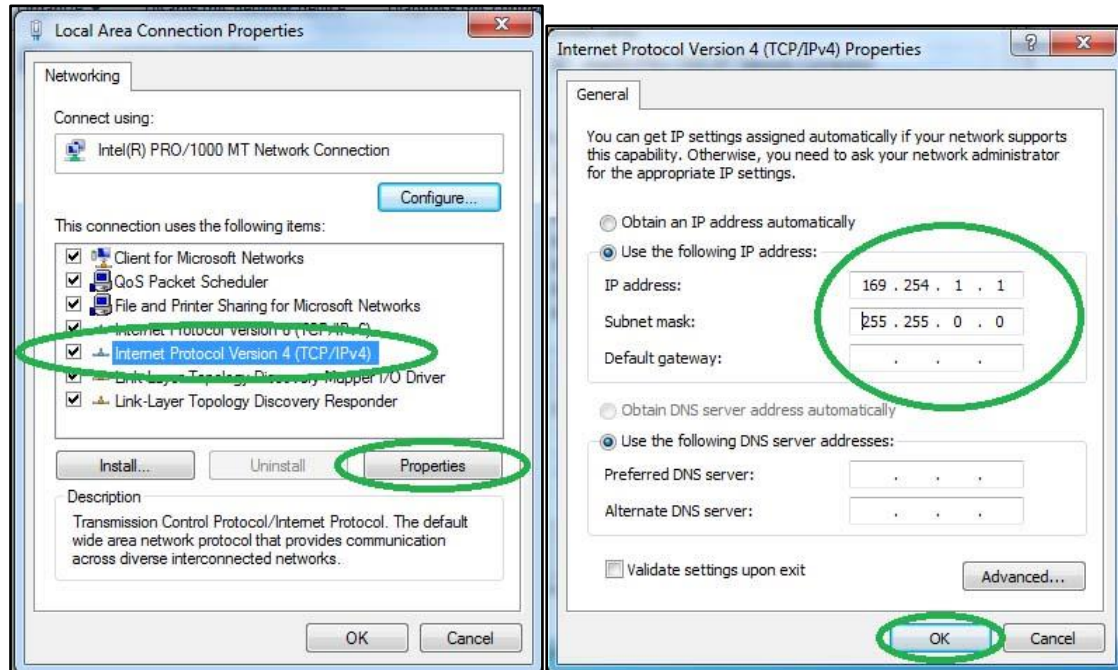
Start vehicle test

Information search

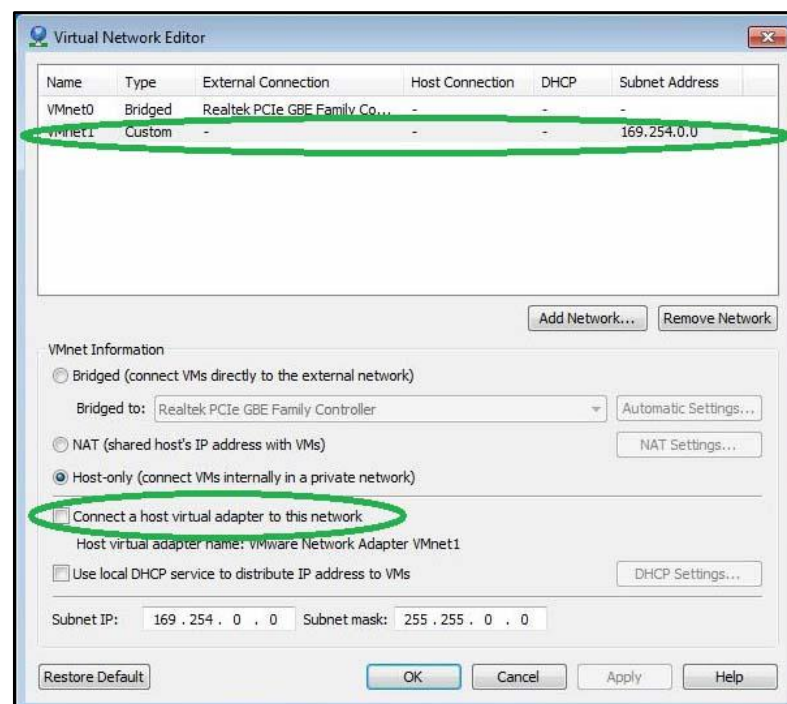


## Using BMW Rheingold ISTA with ICOM

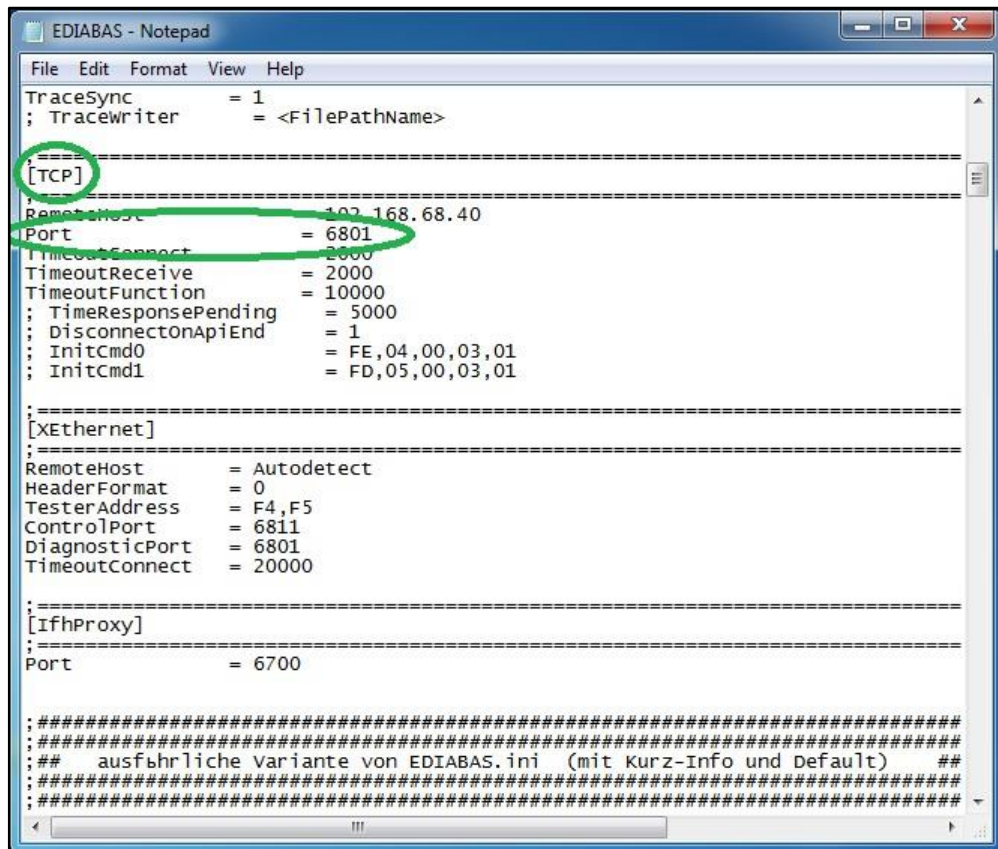
1. Open used for connection network adapter properties, then “Internet Protocol Version 4 (TCP/IPv4)” properties, then enter 169.254.1.1 for “IP address” and 255.255.0.0 for “Subnet mask”.



2. If VMware is installed, open Virtual Network Editor and disconnect from the host any adapters with Subnet Address 169.254.0.0.



3. Open C:\EDIABAS\BIN\EDIABAS.INI with Notepad and check for "Port = 6801" in TCP settings.



```
EDIABAS - Notepad
File Edit Format View Help
TraceSync = 1
; TraceWriter = <FilePathName>

;=====[TCP]====;
RemoteHost = 192.168.68.40
Port = 6801
TimeoutConnect = 2000
TimeoutReceive = 2000
TimeoutFunction = 10000
; TimeResponsePending = 5000
; DisconnectOnApiEnd = 1
; InitCmd0 = FE,04,00,03,01
; InitCmd1 = FD,05,00,03,01

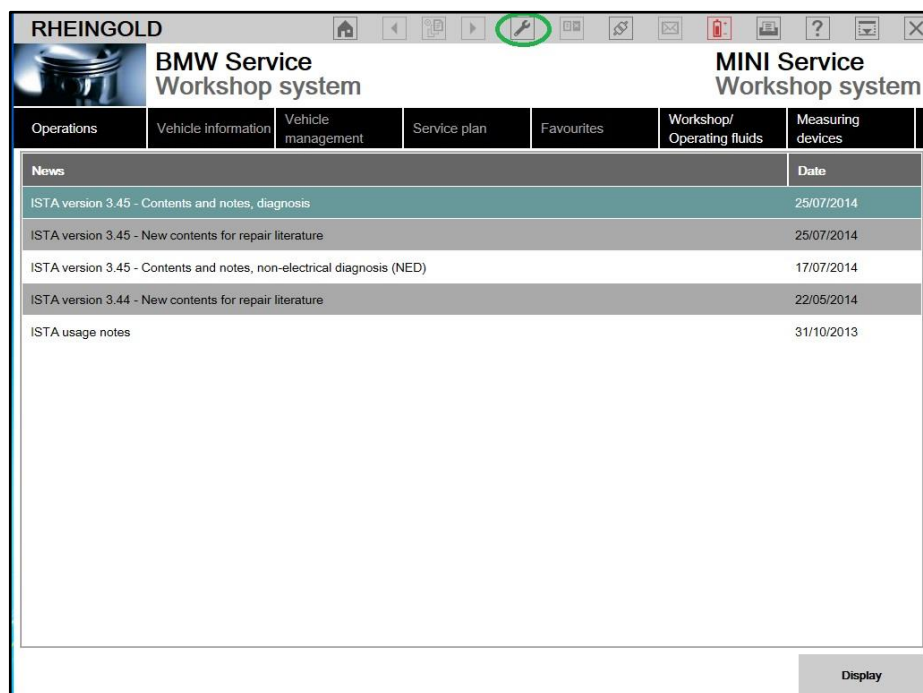
;=====[XEthernet]====;
RemoteHost = Autodetect
HeaderFormat = 0
TesterAddress = F4,F5
ControlPort = 6811
DiagnosticPort = 6801
TimeoutConnect = 20000

;=====[IfhProxy]====;
Port = 6700

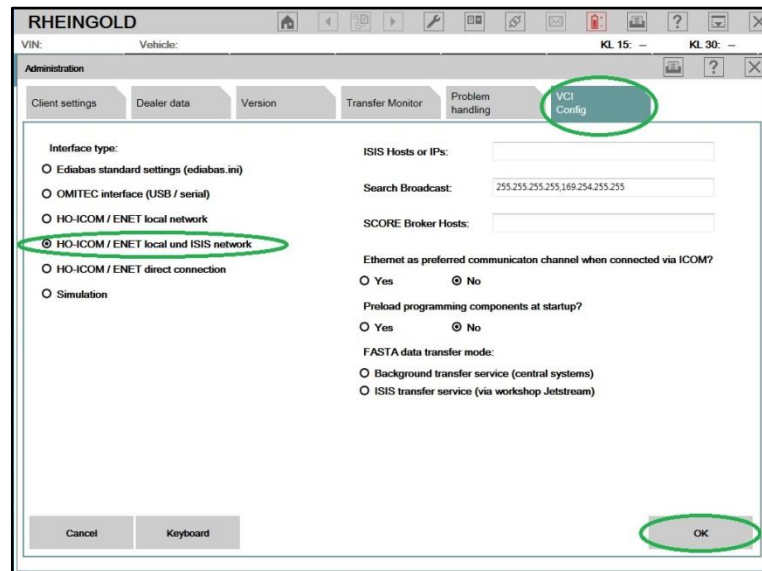
;#####
;## ausführliche Variante von EDIABAS.ini (mit Kurz-Info und Default) ##
;#####
```

4. Connect car with ICOM to PC.

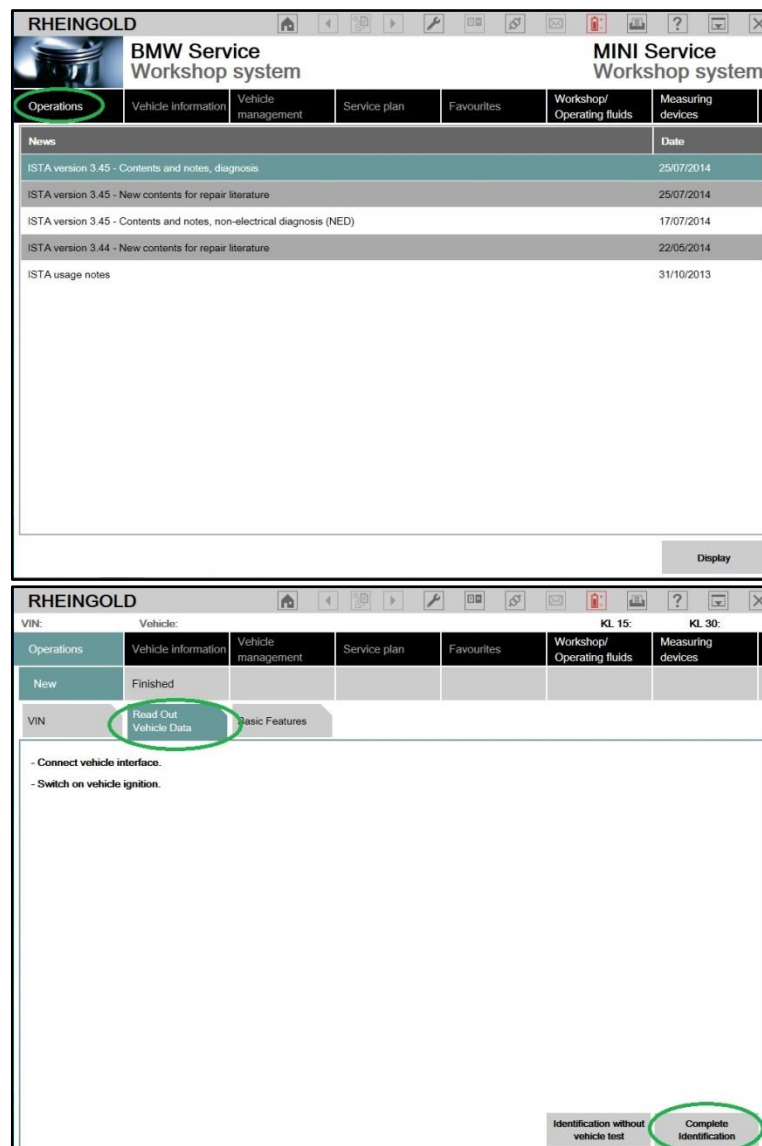
5. Now run BMW Rheingold ISTA using shortcut in start menu and wait until it boots, then press settings button.



7. Select “VCI Config” tab and “HO-ICOM/ENET local and ISIS network”, then “OK”.

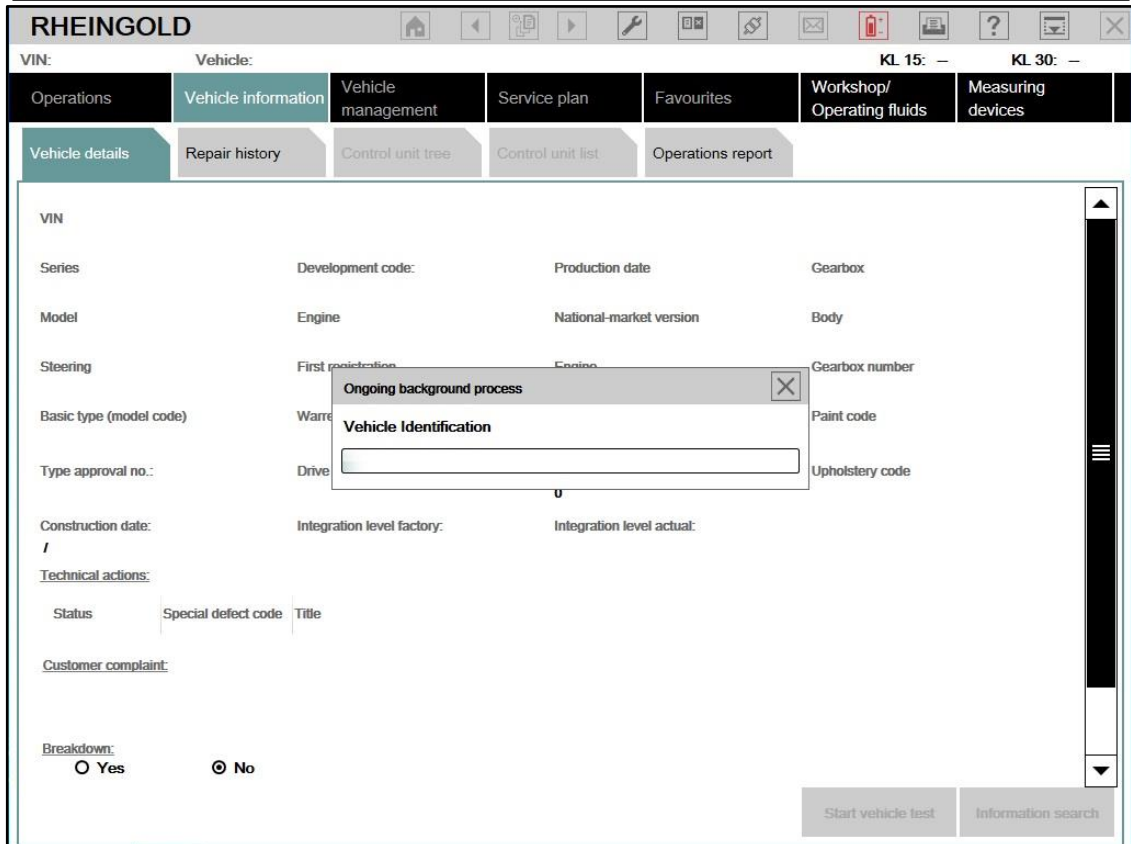
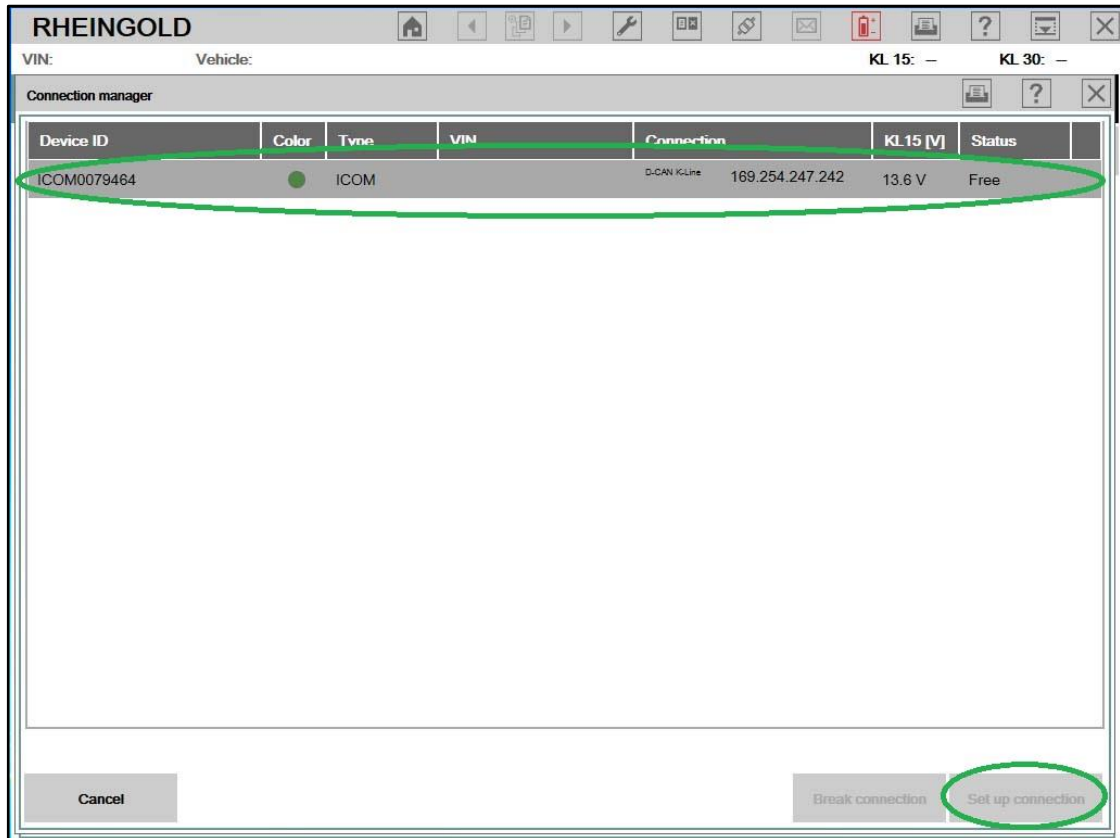


8. Go “Operations”, then “Read Out Vehicle Data” and “Complete Identification”.



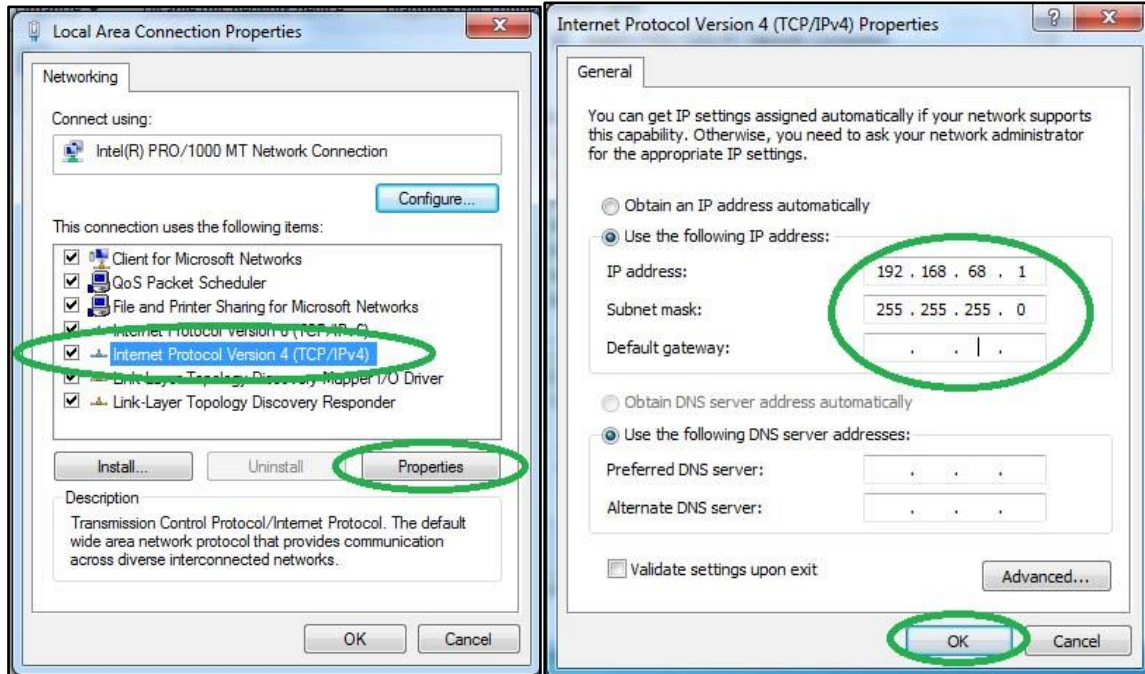


9. Select your ICOM from the list and press “Set up connection” button.

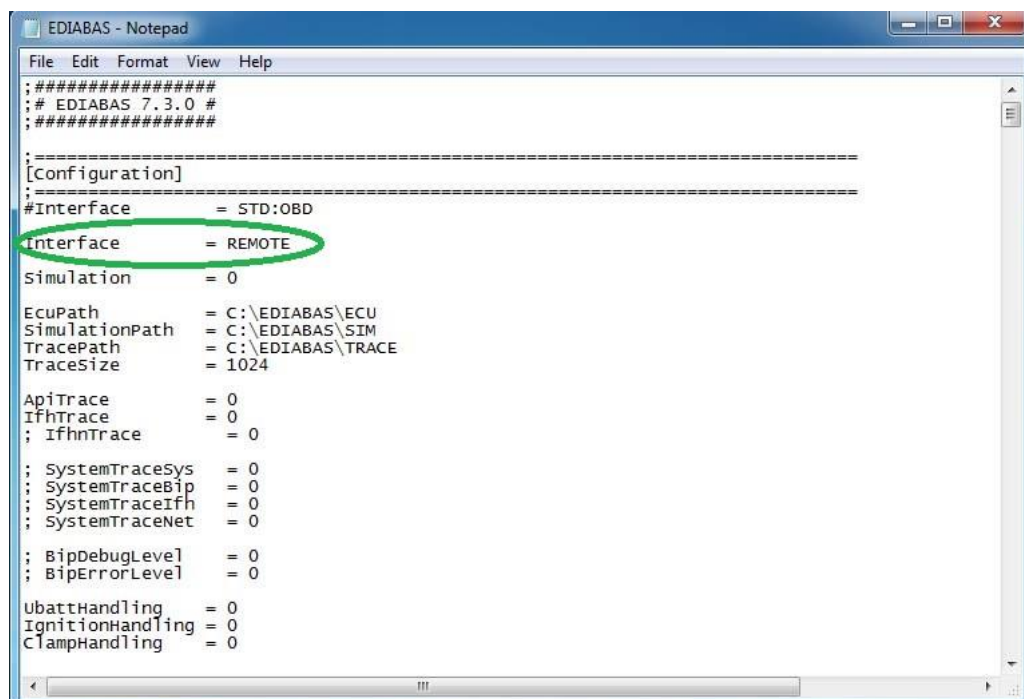


## Using BMW Rheingold ISTA with OPS

1. Open used for connection network adapter properties, then “Internet Protocol Version 4 (TCP/IPv4)” properties, then enter 192.168.68.1 for “IP address” and 255.255.255.0 for “Subnet mask”.



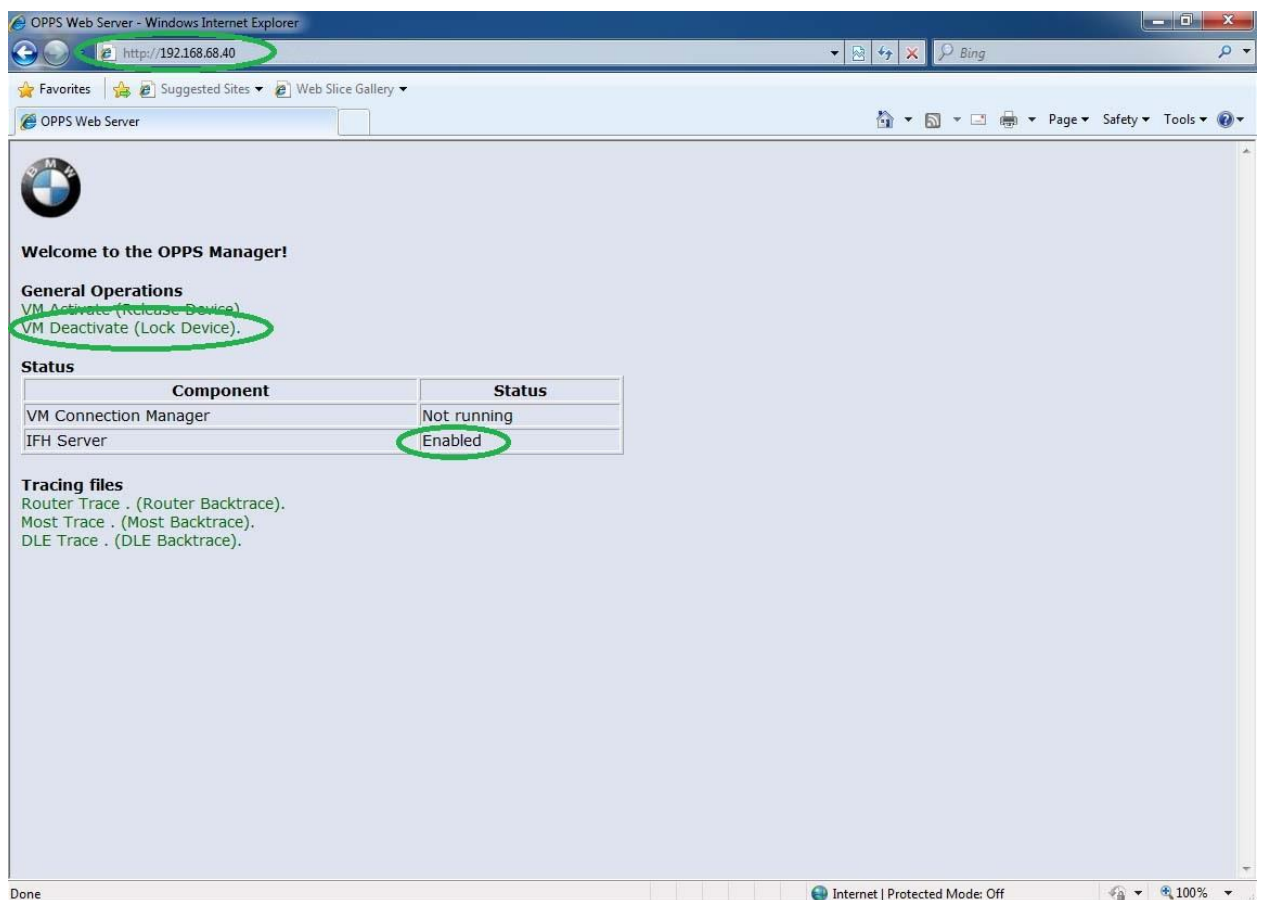
2. If VMware is installed, open Virtual Network Editor and disconnect from the host any adapters with Subnet Address 192.168.68.0.
3. Open C:\EDIABAS\BIN\EDIABAS.INI with Notepad and check for “Interface = REMOTE”. In TCP settings for variable “RemoteHost” specify your OPS IP and “Port = 6801”.



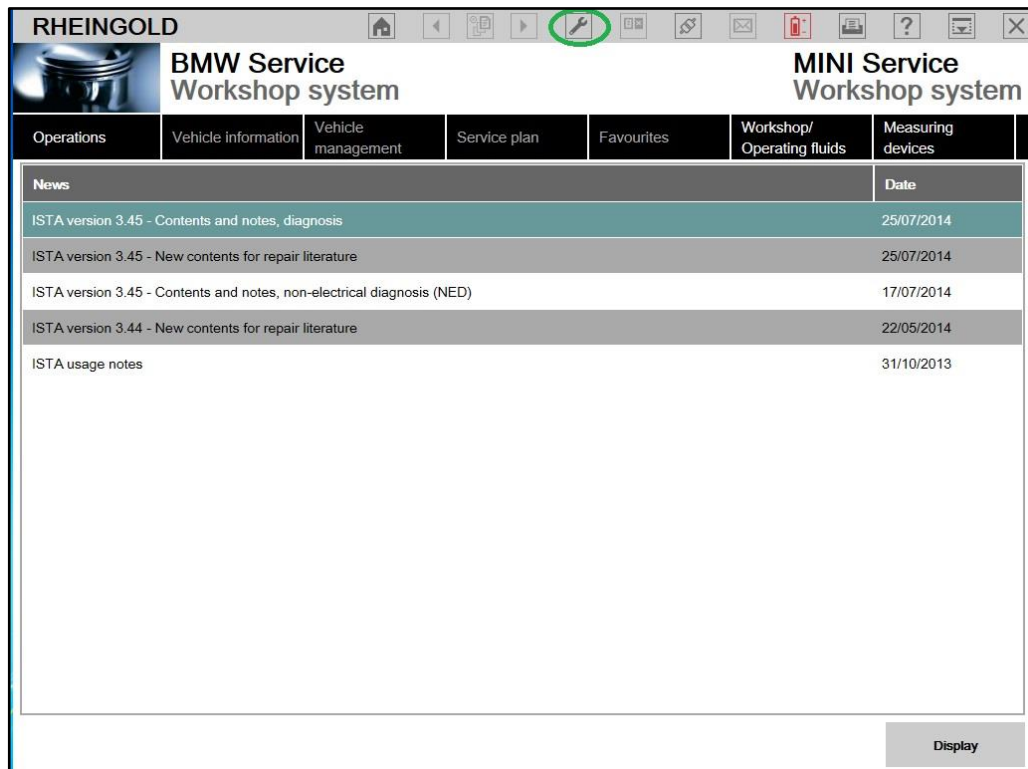
```
EDIABAS - Notepad
File Edit Format View Help
;=====
;[TCP]
;=====
RemoteHost      = 192.168.68.40
Port            = 6801
TimeoutConnect  = 2000
TimeoutReceive  = 2000
TimeoutFunction = 10000
; TimeResponsePending = 5000
; DisconnectOnApiEnd  = 1
; InitCmd0             = FE,04,00,03,01
; InitCmd1             = FD,05,00,03,01
;=====
;[XEthernet]
;=====
RemoteHost      = Autodetect
HeaderFormat    = 0
TesterAddress    = F4,F5
ControlPort     = 6811
DiagnosticPort   = 6801
TimeoutConnect  = 20000
;=====
;[IfhProxy]
;=====
Port            = 6700
;=====
#####
#####
## ausführliche Variante von EDIABAS.ini (mit Kurz-Info und Default) ##
#####
#####
```

4. Connect car with OPS to PC.

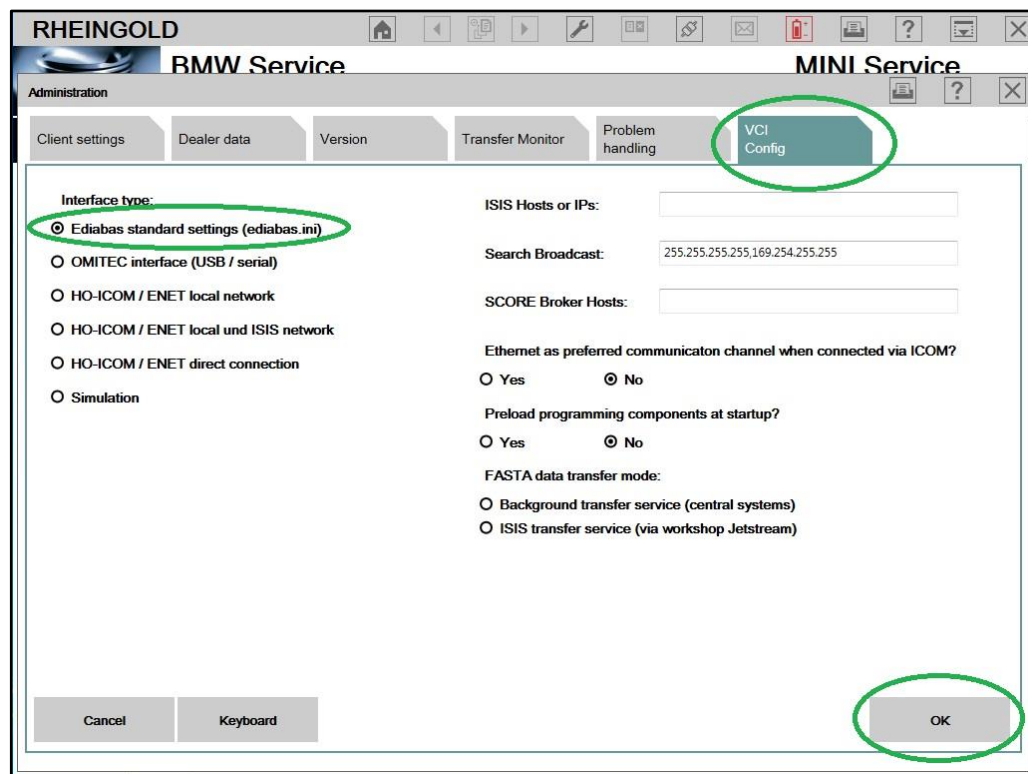
5. Start web-browser, open OPS panel and “Lock device”.



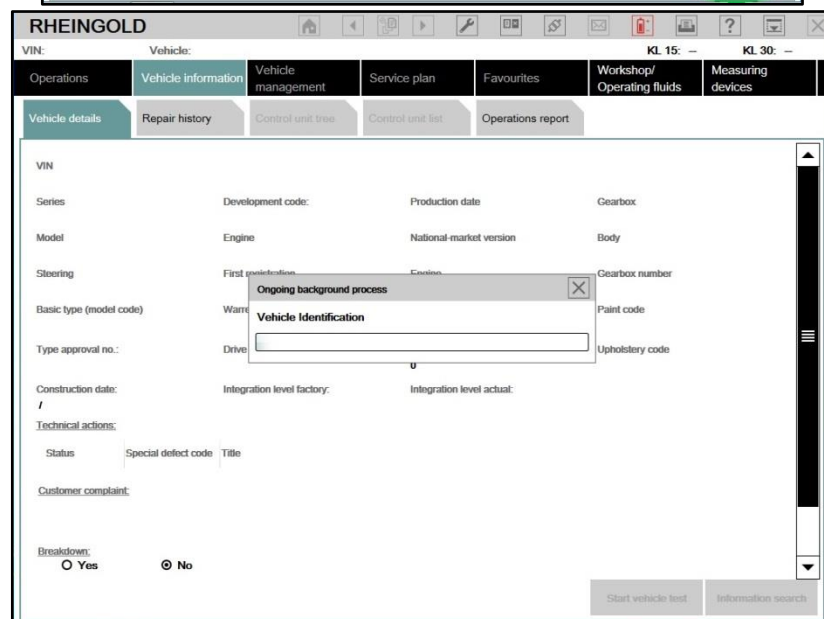
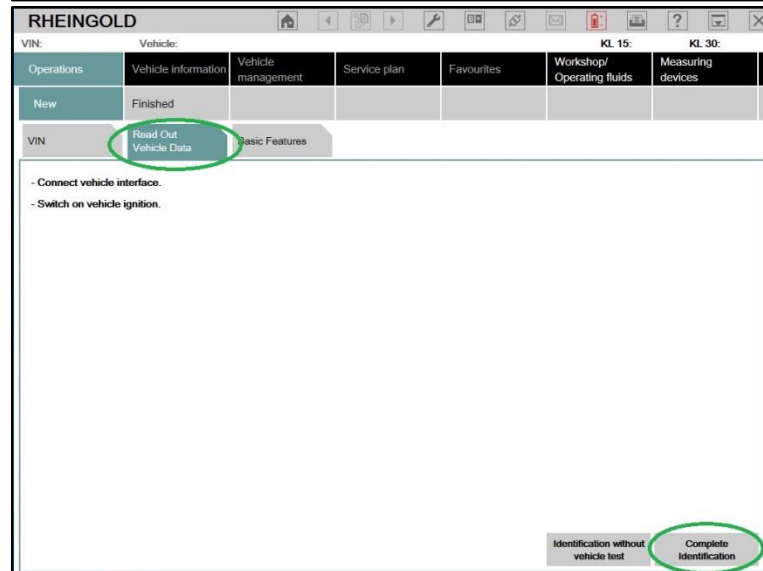
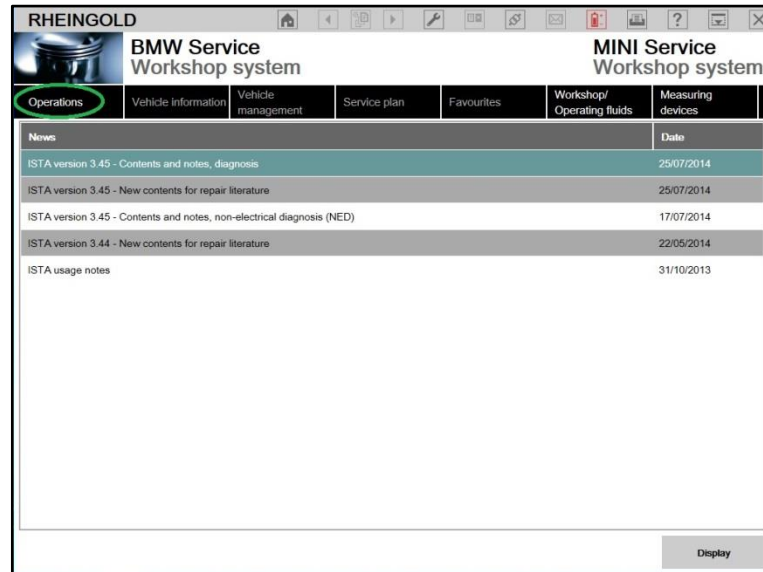
6. Now run BMW Rheingold ISTA using shortcut in start menu and wait until it boots, then press settings button.



7. Select "VCI Config" tab and "Ediabas standard settings (ediabas.ini)", then "OK".



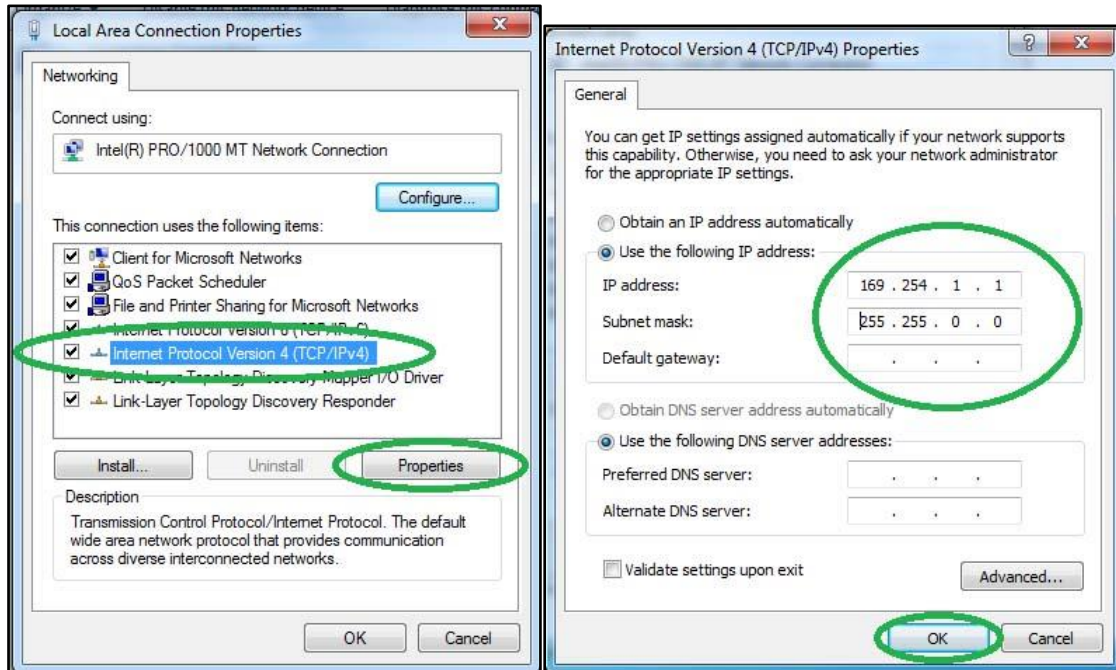
8. Go “Operations”, then “Read Out Vehicle Data” and “Complete Identification”.



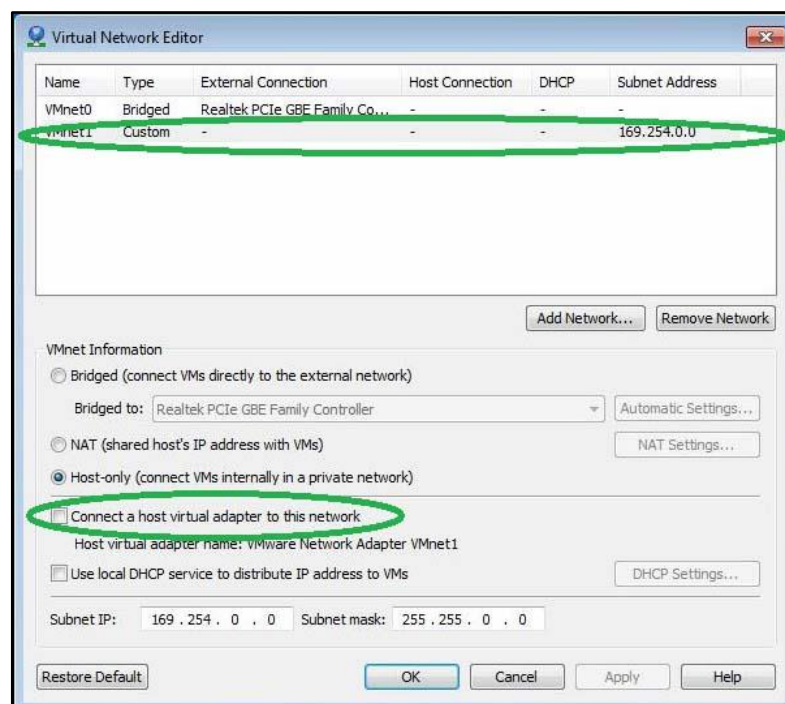


## Using BMW Rheingold ISTA with ENET cable

1. Open used for connection network adapter properties, then “Internet Protocol Version 4 (TCP/IPv4)” properties, then enter 169.254.1.1 for “IP address” and 255.255.0.0 for “Subnet mask”.

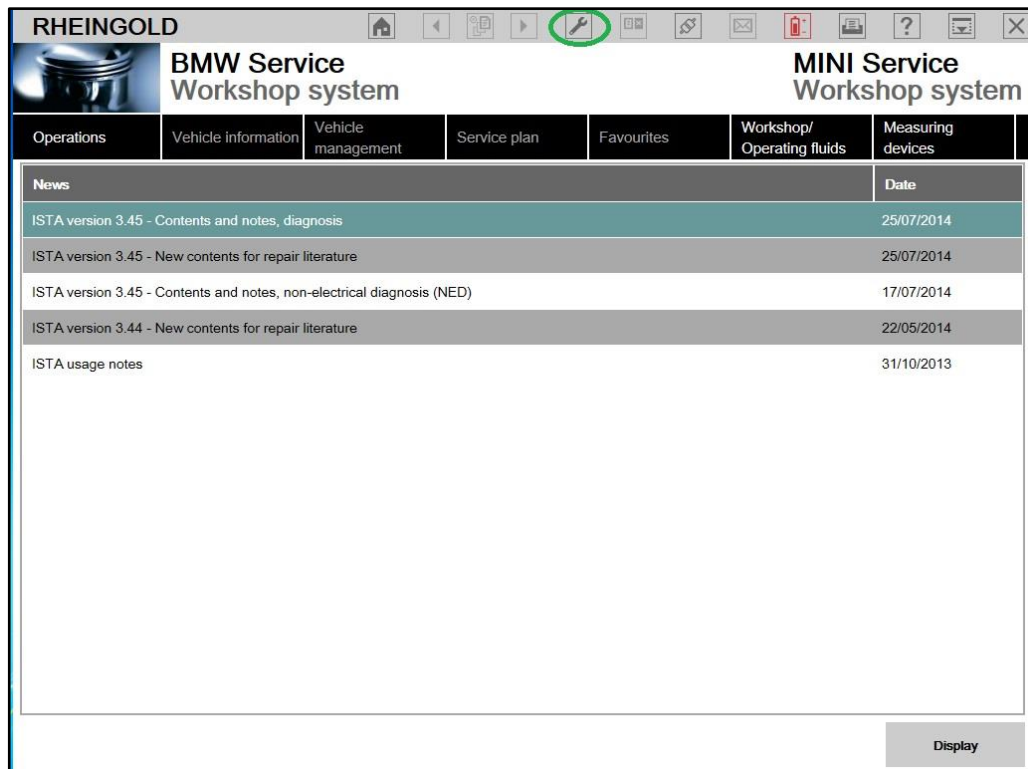


2. If VMware is installed, open Virtual Network Editor and disconnect from the host any adapters with Subnet Address 169.254.0.0.

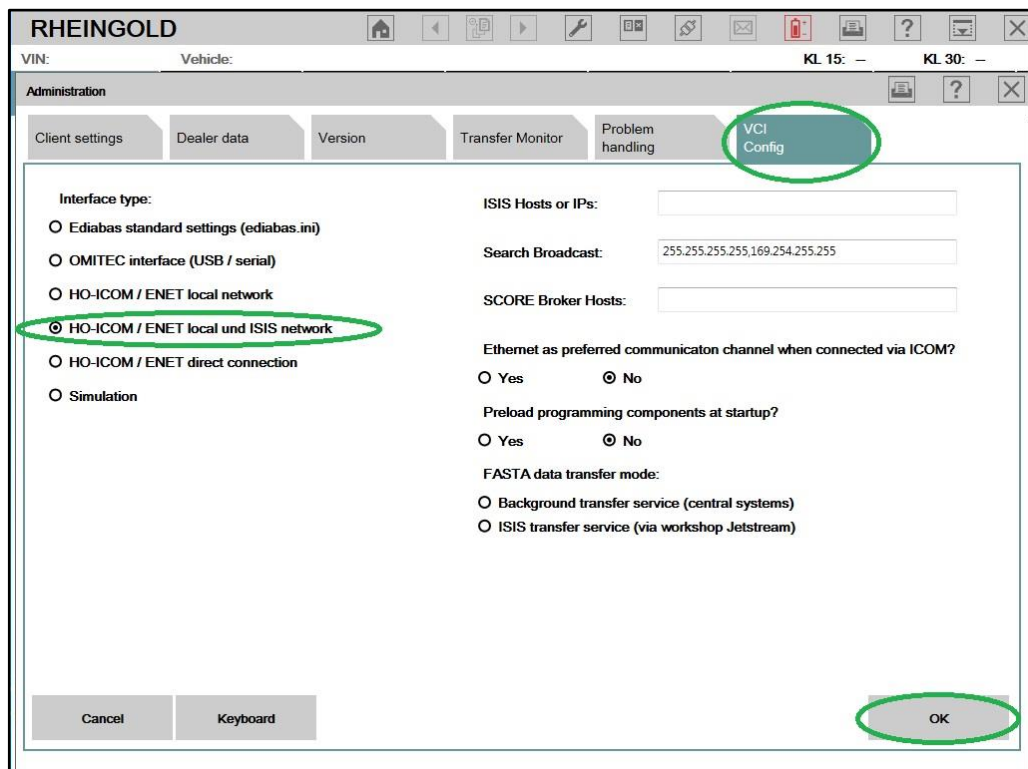


3. Connect car with ENET cable to PC, turn ignition on.

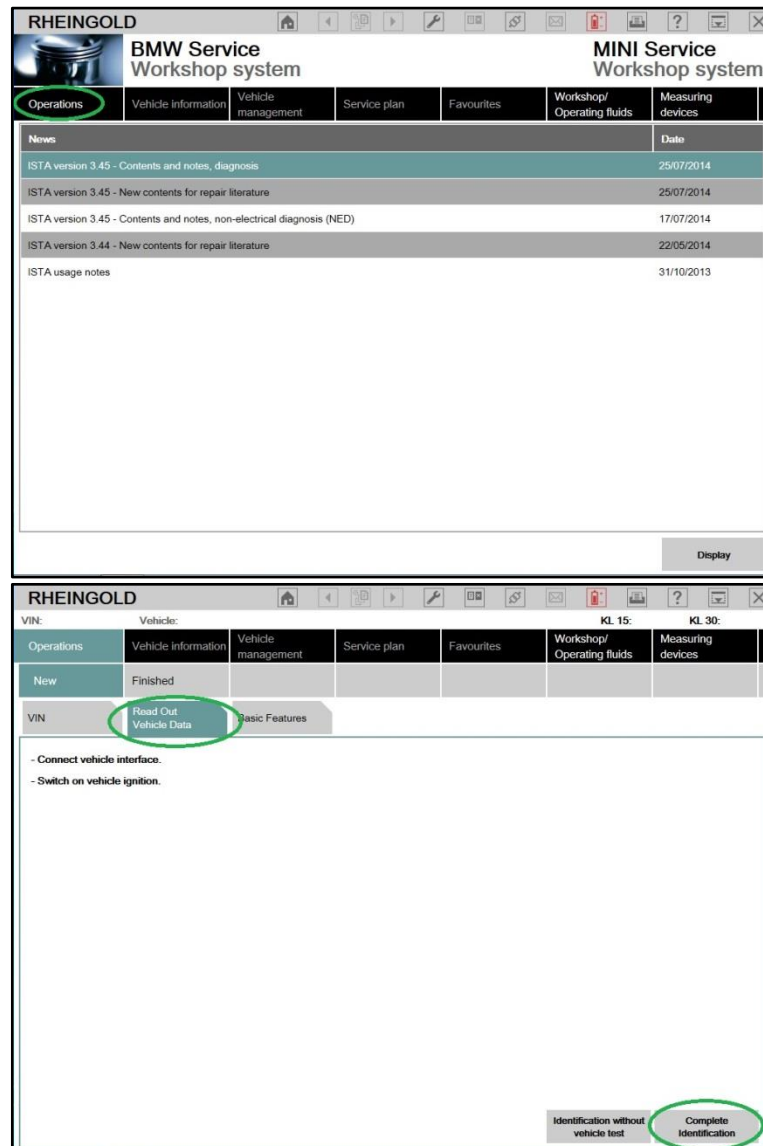
4. Now run BMW Rheingold ISTA using shortcut in start menu and wait until it boots, then press settings button.



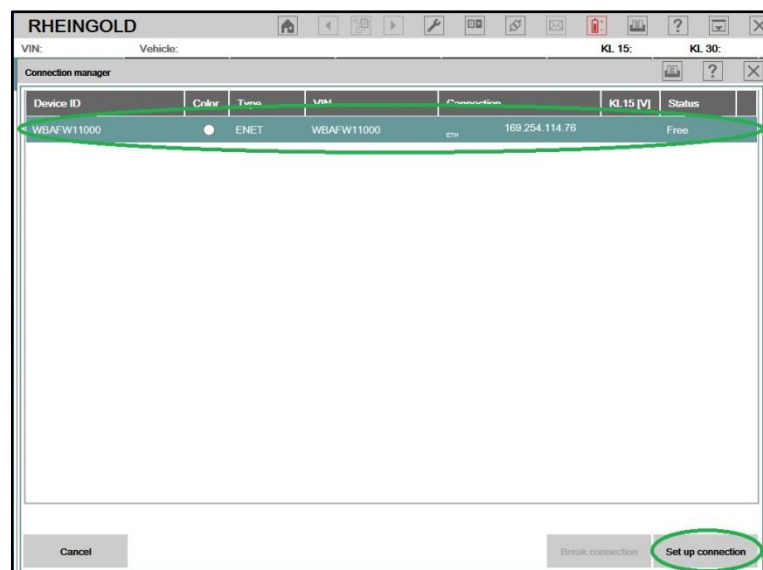
5. Select “VCI Config” tab and “HO-ICOM/ENET local and ISIS network”, then “OK”.



6. Go “Operations”, then “Read Out Vehicle Data” and “Complete Identification”.



7. Select your ENET connection from the list and press “Set up connection” button.



**RHEINGOLD**

VIN: \_\_\_\_\_ Vehicle: \_\_\_\_\_ KL 15: - KL 30: -

Operations Vehicle information Vehicle management Service plan Favourites Workshop/Operating fluids Measuring devices

Vehicle details Repair history Control unit time Control unit list Operations report

VIN

Series Development code: Production date Gearbox

Model Engine National-market version Body

Steering First production date Engine Gearbox number

Basic type (model code) Warts Paint code

Type approval no.: Drive Upholstery code

Construction date: / Integration level factory: Integration level actual:

Technical actions:

Status Special defect code Title

Customer complaint:

Breakdown: ☐ Yes ☒ No

Start vehicle test Information search

8. Alternatively you could select “HO-ICOM/ENET direct connection” in “VCI Config” tab and “ENET” mode with empty “IP-Address” field during connection setup.

**RHEINGOLD**

VIN: \_\_\_\_\_ Vehicle: \_\_\_\_\_ KL 15: - KL 30: -

Administration

Client settings Dealer data Version Transfer Monitor Problem handling **VCI Config**

Interface type:

☐ Ediabas standard settings (ediabas.ini)

☐ OMITEC interface (USB / serial)

☐ HO-ICOM / ENET local network

☐ HO-ICOM / ENET local und ISIS network

☒ **HO-ICOM / ENET direct connection**

☐ Simulation

ISIS Hosts or IPs: \_\_\_\_\_

Search Broadcast: 255.255.255.169.254.255.255

SCORE Broker Hosts: \_\_\_\_\_

Ethernet as preferred communication channel when connected via ICOM?

☐ Yes ☒ No

Preload programming components at startup?

☐ Yes ☒ No

FASTA data transfer mode:

☐ Background transfer service (central systems)

☐ ISIS transfer service (via workshop Jetstream)

Cancel Keyboard OK

**RHEINGOLD**

Select Interface

IP-Address: \_\_\_\_\_

VCI-Typ:

☐ ICOM

☒ **ENET**

Cancel Keyboard OK

Identification Start vehicle test